

Newsletter

May 2008



Junction Branch open!

Yarra Junction, 25 February

More than two years of dedication and commitment were rewarded on the last Monday in summer, when locals and invited guests gathered to celebrate the opening of Yarra Junction District **Community Bank**[®] Branch in the centre of the town.

Held under baking heat, the largely informal ceremony included entertaining performances by students from Gladysdale, St Josephs, Wesburn and Yarra Junction Primary Schools, Little Yarra Steiner School and Upper Yarra Secondary College.

The Yarra Junction District Branch, owned by community shareholders, will operate as a franchise of Bendigo Bank Limited within the same company as the Warburton Branch – Upper Yarra Community Enterprise Limited (UYCEL) – which recently changed its name to reflect its new, 'regional' outlook.

Chair of the Steering Committee, Jaqui Hall, paid tribute to her fellow committee members and expressed great personal satisfaction at the achievement.

Jaqui, who has joined the Board of UYCEL along with Committee Secretary, Barry Sharman, praised the community's support over the lifetime of the project.



Above: Steering Committee Chair and new UYCEL Board Member, Jaqui Hall, thanks the Committee and the Yarra Junction District community at the Branch opening; Entertainment from six local Schools included singing by St Joseph's School Choir and an exhibition by Yarra Junction PS Skipping Squad; Yarra Junction Branch manager Adam Whitworth and staff members Karen, Carla, Emily and Marissa meet Robert Musgrove, General Manager Communities and Partners, Bendigo Bank Limited.

Robert Musgrove, General Manager Communities and Partners at Bendigo Bank, congratulated everyone involved.

'Today represents the completion of a string of **Community Bank**[®] Branches along the Warburton Highway,' Robert said, 'and is a strong reminder of the power of rural communities when a goal is in sight.'

Yarra Junction Branch: How did it happen?



The Yarra Junction and District Community Bank Steering Committee worked tirelessly for more than two years to achieve its goal.



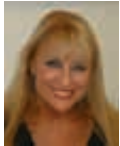
The members of the committee are Jaqui Hall (Chairperson), Andrew McMath (Vice Chairperson), Barry Sharman (Secretary), Sharon Hawkins, Glennice Mathers, Cathy Long, John Hall, Barry Teklenberg, Marie Cranston, Ron Hottes, Ray Seeger, Steve Saville and Terina Houlihan. Kate Sanders, a student, was forced to leave the Committee due to study commitments.



Milestones



December 2005: The idea for a **Community Bank**® in Yarra Junction was first floated past Jaqui Hall. Jaqui investigated with other bank branches and with BBL, gathering an array of supportive locals who may be interested in forming a 'Steering Group'.



May 2006: The inaugural Steering Group first met. Members were briefed and prepared for their role by BBL.



August 2006 saw the official launch of the Pledge and Awareness Campaign, requiring a great deal of work by the group: street stalls, community rallies, representations to sporting and community groups to raise awareness and secure pledges of interest. BBL required \$650,000 in pledges; the first six weeks raised \$200,000,



October 2006: a public information meeting at Yarra Junction Football Club rooms resulted in \$400,000 in pledges by the end of the month and achieving the pledge target by November.



The subsequent Feasibility Study and Community Survey results confirmed the Yarra Junction Branch was viable.

The Committee then examined the benefits of entering a partnership and had discussions with both Woori Yallock and Warburton Branch boards. After a lengthy process members decided to partner Warburton.

It took almost 12 months for the technical issues to be resolved. There were meetings and consultation at every level before the Committee launched the final prospectus on 11 December 2007.

The uptake of shares was, however, fast. By the closing date of 12 February 2008 there were about 270 new shareholders, who had invested \$730,250.00.

Yarra Junction Branch is the 207th **Community Bank**® in Australia.

Above: some of the Steering Committee members – Andrew McMath, Ron Hottes, Sharon Hawkins, Barry Teklenberg, Cathy Long, Glennice Mathers, John Hall, Marie Cranston.

Our new directors

Jaqui Hall



Jaqui and husband John have lived in Gladysdale since 1974 and are proud parents of two sons. They are currently enjoying their two grandchildren, Violet and Angus.

She has been actively involved in community groups over many years: helping to establish a play-group at

Don Valley when her children were babies, through 15 years on school councils and continued participation in various sporting clubs.

Jaqui is currently Lady President of the Warburton Golf and Sporting Club.

Over the past 4 years Jaqui has been involved with the traders group in Yarra Junction, culminating in the formation of a committee to begin the 'Awareness Campaign' for a Community Bank in the township.

Having recently sold her business Jaqui plans to do further community work wherever there is a demonstrated need.

As part of the Upper Yarra Community Enterprise Board she brings real passion for the community and enthusiasm about the difference we can all make by supporting the Community Bank model.

Barry Sharman



Barry lives in Warburton with his two children James aged six and Jordan aged five. He has worked at the Little Yarra Steiner School since June 2003.

Barry's first employment after completing High School was in Banking. From there his career moved to the Hospitality trade,

where he has held management roles within Hotels throughout Victoria, New South Wales and the Northern Territory.

Barry has travelled Australia extensively and contributed as a volunteer for a variety of environmental organisations including the Australian Trust for Conservation Volunteers, Surfrider Foundation, Variety Club and Greenpeace.

Barry is on the Board of Directors of Upper Yarra Community Enterprises Ltd as a representative of Yarra Junction Community Bank Steering Committee, where he holds the role of Secretary.

Barry thoroughly enjoys the tranquil bush surroundings and abundant wildlife in the Yarra Valley. The value of sharing the quiet watching of platypus in the river with his children, is a priceless legacy he wishes to share with generations to come.

Community Grants update

Our shareholders appreciate the many benefits of community banking. One of the most significant bonuses of 'owning our bank' is that we share our profits with the broad range of local community groups which do so much good work in the district.

Recent projects we have funded include the following.

Warburton Highway Tourism – Chilled Water Dispenser – \$1500

Warburton Highway Tourism volunteers recognised that visitors to their Information Centre in the Waterwheel building were often hot and thirsty – and that a water cooler would not only address this need but also provide a 'refreshing' welcome to Warburton.

Baden Berry, President of WHT, said 'Our role is to offer visitors to Warburton an enjoyable experience. As in the past, our **Community Bank**® has backed our efforts. We look forward to continuing this strong partnership into the future.'

Warburton Advancement League – Track Maintenance and Equipment – \$5000



Warburton's famous river tracks, started in 1993 as a League project and since extended to more than six kilometres, need constant attention from the equally famous 'River Crew' – all of whom work voluntarily.

WAL President, Jesse James, said that the new funding will cover the purchase of three heavy-duty brushcutters and an enormous volume of gravel to help keep the tracks in pristine condition.

Warburton Primary Out Of School Hours care (WOOSH) – Computer – \$1500

The WOOSH program, run by Warburton Primary School, offers before-school and after-school care to primary school students whose parents need to leave early in the morning for work (or study) and for those who can't get back in time to pick their children up after school.

According to program co-ordinator, Melissa Hall, the new laptop computer is used for all WOOSH administrative records and other tasks associated with the program and accreditation, such as documenting Policies and Procedures.

SES – Winch – \$1,418.27

Upper Yarra SES is a volunteer-based organisation providing emergency services to the region. Its roles include planning for and responding to floods, severe storms, road accidents and search and rescue, as well as providing a support role to other emergency services such as Victoria Police and the CFA.

The grant will pay for a winching system for the SES's new rescue vehicle, enabling them to respond more effectively and efficiently to rescue incidents.

Warburton–Millgrove Sports Club – Security Upgrade – \$1000



After a series of break-ins and burglaries incurring significant losses, W-MSC successfully applied for funding to help protect their premises into the future.

Rob Morter, Treasurer of W-MSC, praised the Bank's support for their organisation over the past five years. 'Alongside our tireless volunteers, the **Community Bank**® is helping us face the future with confidence,' he said.

Warburton Primary School – Garden Program – \$4,800



Warburton Primary School has a fantastic garden program which helps teach children in a 'hands on' way all about organic vegetable growing methods.

'There is also a big focus on sustainability,' says Sharyn Morrice, who co-ordinates the program, 'and the children are encouraged to protect the environment.'

All school students participate in the program, learning about weeding, mulching, watering, building garden beds, making compost, spreading compost on the garden, sowing seeds – both directly and into cells or punnets, potting up small seedlings, raking up and collecting leaves, designing new garden beds and cooking – using produce from their garden, of course.

Any adult interested in helping out as a group leader is encouraged to volunteer – call 5966 2010.

Upper Yarra Secondary College – Police High Ropes Challenge 2008 – \$6,000

According to UYSC Student Wellbeing Coordinator, Elizabeth Fox, the philosophy behind the Challenge is one of empowering our young people to face fears, to practise perseverance and to build interpersonal skills in a supportive and safe environment.

‘Over the years since it began hundreds of our young people have been afforded the opportunity to participate, thanks to the ongoing monetary support from Upper Yarra Community Enterprises Limited,’ said Elizabeth.

‘The high-ropes challenge involves our students working with local police officers from Warburton and Yarra Junction and offers an excellent opportunity for our local young people to build meaningful and lasting relationships with them, as well as increasing their personal confidence and self-belief.’

Warb Senior Citizens – Covered Walkway – \$5,000

The covered walkway will protect users from the elements at the entrance to the Centre in Dammans Road.

Warburton Advancement League – Community Bus – \$15,000 over three years



For several years active member of the Warburton community, Joseph Guthrie, noticed that a shortage of affordable transport often curtailed the activities of a wide range of community groups. He also noticed a number of small buses on the roads around Melbourne which were sponsored by other Community Banks.

When Joseph heard that Millwarra Primary School was planning to upgrade – and sell its old 22-seater – he was quick to investigate the possibility of the Warburton community buying its own bus.

He found a willing partner in the Warburton Advancement League, who saw the merit in his proposal and successfully applied for a Community Grant.

With the purchase completed, the bus has been road-worthy and serviced and, at time of writing, is awaiting fresh new signage for its public launch in the near future.

Call Joseph for further information and bookings on 5966 2482. He is particularly interested in hearing from suitably licensed volunteer drivers who may be available to help out occasionally.

Have a say in the **future** of your **community**

Director, Upper Yarra Community Enterprise Limited

Expressions of interest are invited for the position of Director of Upper Yarra Community Enterprise Limited, operators of Warburton and Yarra Junction **Community Bank**[®] Branches of Bendigo Bank.

As a volunteer Director you will act as an ambassador for our Branches, actively building their customer base. You will also provide the leadership and management skills at Board level to support and drive the Company's strategic direction, goals and objectives.

Although the position is voluntary, as a director of our Company you will have a real say in the future direction of both **Community Bank**[®] Branches and your community.

Further information is available from Geoff Vickers on 5966 9028. Please forward your application to: P.O. Box 434, Warburton, VIC. 3799

Community FOCUS

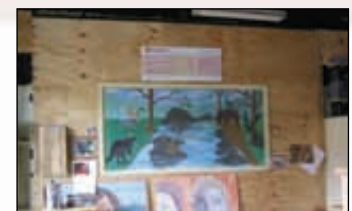
Warburton Men's Shed

Warburton Men's Shed made a successful application for Community Bank funding in 2007.

‘The money has improved our amenity a lot,’ says supervisor Charlie Johnston. ‘It paid for the sound-proof wall we built and installed last year, and enabled us to connect our Shed to the mains water supply.’

‘We have also bought a Triton bench and saw outfit – I don't know how we worked without it! – and a new sander. A large heater, a bandsaw and possibly a new fridge are still on the shopping list.’

The Shed is open to men of all ages and backgrounds every Wednesday between 10 and 3 at the Warburton Business Incubator. Enquiries: 5967 1776.



*Clockwise from top left: Warburton **Community Bank**[®] Branch Manager Darren Pennington and Men's Shed support staff Kath Holton and Charlie Johnston at the cheque handover last June; the new soundproof wall; the new Triton equipment.*

Board of Directors, Upper Yarra Community Enterprise Limited
Registered Office: 3399 Warburton Highway, Warburton, VIC 3799

Jaquilyn Hall, Barry Sharman, Rodney McKail, Catherine Aulich, Elizabeth Fox, Barry Marshall,
Max Magee, Rodney Woods, Geoff Vickers